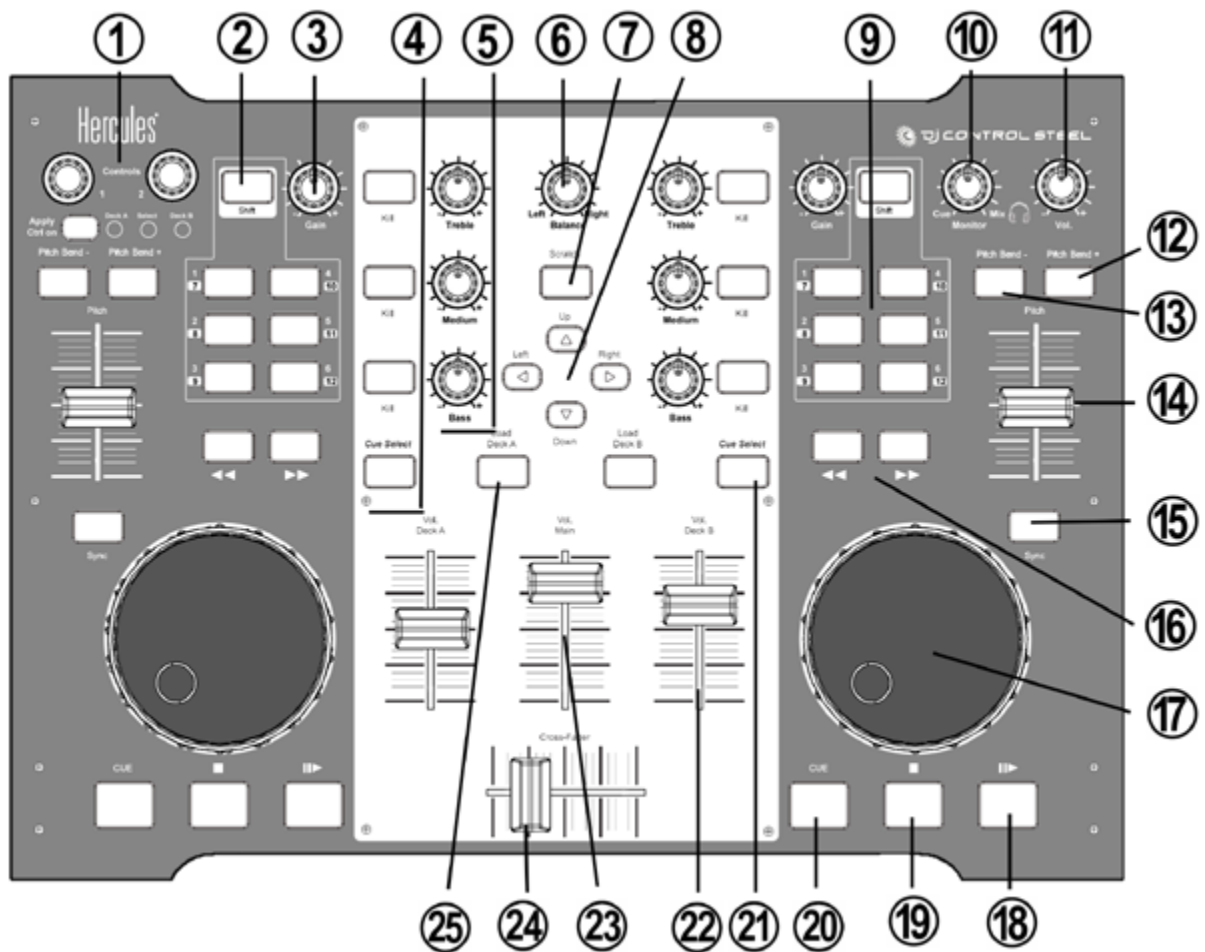


HERCULES - DJ CONTROL STEEL

- 1 - FX Amount/Seek Length/Pitch Range
- 2 - Shift (hardware)
- 3 - Gain
- 4 - Kill
- 5 - EQ
- 6 - *unused*
- 7 - Vinyl Mode

- 8 - Browse/Select/Preview
- 9.1.2.3 - Locators - *Clear locators*
- 9.4 - Shift (software)
- 9.5 - FX Select
- 9.6 - FX On Off
- 9.7.8.9 - Manual loop
- 9.10.11.12 - Auto loop
- 10 - Monitor Mix

- 11 - Monitor Volume
- 12/13 - Pitch Bend
- 14 - Pitch
- 15 - Sync
- 16 - Seek
- 17 - Jog



- 18 - Play Pause
- 19 - Cue Play
- 20 - Cue Stop
- 21 - Headphones

- 22 - Volume Fader
- 23 - Master Volume
- 24 - Crossfader
- 25 - Load